

## **Wallace Dr between Willis Point Rd and Municipal Boundary**

**March 31, 2019 To April 05, 2019**



The data presented here is for information purposes only and should not be considered authoritative for construction, geotechnical, engineering, navigational, legal, or other site-specific uses. The information shared is owned by the Transportation Division of the Engineering Department at the District of Saanich. Accuracy is not guaranteed.

Start Date: 1-Apr-19  
 Start Time: 0:03  
 Station ID: C0074-01

**Location 1: Wallace Dr between Willis Point Rd and Municipal Boundary**  
 Note: Willis Point Rd and Municipal Boundary

DATE:	April 1, 2019		April 2, 2019		April 3, 2019		April 4, 2019		April 5, 2019		WK AVG		WK AVG	HOURLY
	MON		TUE		WED		THURS		FRI		CH 1+2		%	
Time:	NB	SB	NB	SB	NB	SB	NB	SB	NB	SB	NB	SB		
12-1 AM					8	0	10	0	7	0	8	0	8	0.3%
1-2 AM					1	1	0	0	2	0	1	0	1	0.0%
2-3 AM					1	0	2	0	2	0	2	0	2	0.1%
3-4 AM					2	1	0	1	0	1	1	1	2	0.1%
4-5 AM					4	3	3	3	4	1	4	2	6	0.2%
5-6 AM					12	19	7	10	11	10	10	13	23	0.8%
6-7 AM					68	61	70	52	73	61	70	58	128	4.2%
7-8 AM					92	151	91	152	92	165	92	156	248	8.1%
8-9 AM					95	179	89	151	108	163	97	164	262	8.6%
9-10 AM					93	102	74	86	75	97	81	95	176	5.8%
10-11 AM					81	83	63	77	73	74	72	78	150	4.9%
11-12 PM					101	93	74	72	89	77	88	81	169	5.5%
12-1 PM					88	111	72	87	77	103	79	100	179	5.9%
1-2 PM					91	103	88	88	77	117	85	103	188	6.2%
2-3 PM					105	126	93	104	95	122	98	117	215	7.0%
3-4 PM					124	173	118	177	105	174	116	175	290	9.5%
4-5 PM					169	156	145	140	166	175	160	157	317	10.4%
5-6 PM					175	106	136	88	141	127	151	107	258	8.4%
6-7 PM					76	95	95	75	103	79	91	83	174	5.7%
7-8 PM					51	38	67	26	69	40	62	35	97	3.2%
8-9 PM					49	19	46	27	48	19	48	22	69	2.3%
9-10 PM					40	12	23	15	36	9	33	12	45	1.5%
10-11 PM					16	12	21	5	21	11	19	9	29	0.9%
11-12 AM					5	2	12	3	12	7	10	4	14	0.4%
<b>LANES</b>					<b>1547</b>	<b>1646</b>	<b>1399</b>	<b>1439</b>	<b>1486</b>	<b>1632</b>	<b>1477</b>	<b>1572</b>	<b>3050</b>	<b>100.0%</b>
<b>TOTAL</b>					<b>3193</b>		<b>2838</b>		<b>3118</b>		<b>3050</b>			
	MON		TUE		WED		THURS		FRI		WK AVG			

PEAK HOUR					TOTAL VEHICALS-PEAK PERIODS		2 HOUR PEAK INTERVALS				
MAX. 7 - 9 am PEAK HOUR	262	⇒	8.6%	between 8-9 AM	1432	⇒	6 HR TOTAL	<b>2 HR AM (7 - 9 AM)</b>			
MAX. 7 - 11 am PEAK HOUR	262	⇒	8.6%	between 8-9 AM	1084	⇒	4 HR TOTAL	VEH / HR	VEH / 2HR	2 HR %	
MAX. 11 am - 1 pm PEAK HOUR	179	⇒	5.9%	between 12-1 PM				7-8 AM	248	509	16.7%
MAX. 11 am - 3 pm PEAK HOUR	215	⇒	7.0%	between 2-3 PM				8-9 AM	262		
MAX. 4 - 6 pm PEAK HOUR	317	⇒	10.4%	between 4-5 PM				<b>2 HR NOON (11 - 1 PM)</b>			
MAX. 3 - 6 pm PEAK HOUR	317	⇒	10.4%	between 4-5 PM				VEH / HR	VEH / 2HR	2 HR %	
								11-12 PM	169	348	11.4%
								12-1 PM	179		
								<b>2 HR PM (4 - 6 PM)</b>			
								VEH / HR	VEH / 2HR	2 HR %	
								4-5 PM	317	575	18.8%
								5-6 PM	258		

# Wallace Dr between Willis Point Rd and Municipal Boundary

Northbound

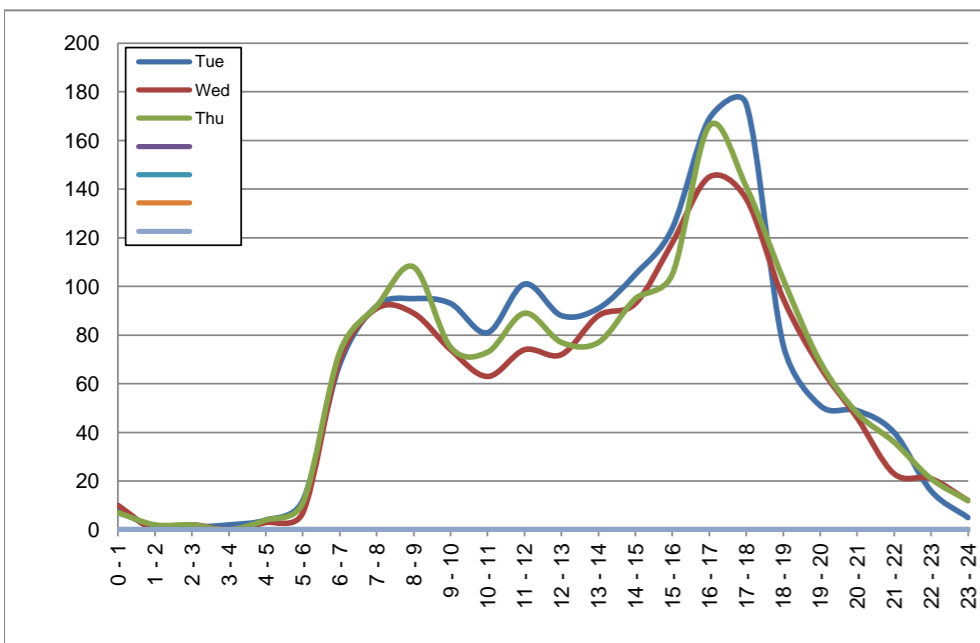
April 2, 2019 to April 4, 2019

## Hourly Volumes

Time Period	Tue	Wed	Thu			
	Apr 2	Apr 3	Apr 4			
0 - 1	8	10	7			
1 - 2	1	0	2			
2 - 3	1	2	2			
3 - 4	2	0	0			
4 - 5	4	3	4			
5 - 6	12	7	11			
6 - 7	68	70	73			
7 - 8	92	91	92			
8 - 9	95	89	108			
9 - 10	93	74	75			
10 - 11	81	63	73			
11 - 12	101	74	89			
12 - 13	88	72	77			
13 - 14	91	88	77			
14 - 15	105	93	95			
15 - 16	124	118	105			
16 - 17	169	145	166			
17 - 18	175	136	141			
18 - 19	76	95	103			
19 - 20	51	67	69			
20 - 21	49	46	48			
21 - 22	40	23	36			
22 - 23	16	21	21			
23 - 24	5	12	12			
<b>Day Total</b>	<b>1547</b>	<b>1399</b>	<b>1486</b>			

## 15-Minute Volumes

Time Start	Tue	Wed	Thu				Time Start	Tue	Wed	Thu			
	Apr 2	Apr 3	Apr 4					Apr 2	Apr 3	Apr 4			
0:00	4	4	2				12:00	26	22	17			
0:15	3	4	2				12:15	22	18	21			
0:30	0	2	2				12:30	21	20	22			
0:45	1	0	1				12:45	19	12	17			
1:00	0	0	0				13:00	19	17	22			
1:15	1	0	1				13:15	24	23	17			
1:30	0	0	1				13:30	15	27	15			
1:45	0	0	0				13:45	33	21	23			
2:00	0	0	1				14:00	23	25	28			
2:15	0	0	0				14:15	35	22	28			
2:30	0	1	0				14:30	25	23	23			
2:45	1	1	1				14:45	22	23	16			
3:00	0	0	0				15:00	33	27	24			
3:15	1	0	0				15:15	31	26	36			
3:30	0	0	0				15:30	27	37	19			
3:45	1	0	0				15:45	33	28	26			
4:00	0	0	0				16:00	35	30	43			
4:15	1	0	0				16:15	38	39	42			
4:30	2	2	3				16:30	53	41	43			
4:45	1	1	1				16:45	43	35	38			
5:00	1	1	1				17:00	51	43	38			
5:15	3	1	1				17:15	41	32	40			
5:30	4	1	3				17:30	40	35	26			
5:45	4	4	6				17:45	43	26	37			
6:00	4	3	7				18:00	23	23	31			
6:15	12	11	9				18:15	22	26	28			
6:30	28	30	29				18:30	14	23	16			
6:45	24	26	28				18:45	17	23	28			
7:00	15	15	17				19:00	12	21	14			
7:15	19	21	20				19:15	15	20	26			
7:30	28	22	23				19:30	10	11	18			
7:45	30	33	32				19:45	14	15	11			
8:00	31	26	38				20:00	14	15	12			
8:15	28	35	24				20:15	14	12	15			
8:30	14	15	22				20:30	13	8	11			
8:45	22	13	24				20:45	8	11	10			
9:00	28	22	24				21:00	12	10	12			
9:15	21	20	22				21:15	12	3	9			
9:30	20	18	18				21:30	9	5	4			
9:45	24	14	11				21:45	7	5	11			
10:00	20	19	18				22:00	6	10	5			
10:15	23	11	27				22:15	2	5	9			
10:30	21	17	15				22:30	4	4	4			
10:45	17	16	13				22:45	4	2	3			
11:00	23	18	17				23:00	2	3	3			
11:15	21	25	28				23:15	0	6	5			
11:30	31	11	27				23:30	1	2	3			
11:45	26	20	17				23:45	2	1	1			



Site notes:

# Wallace Dr between Willis Point Rd and Municipal Boundary

Southbound

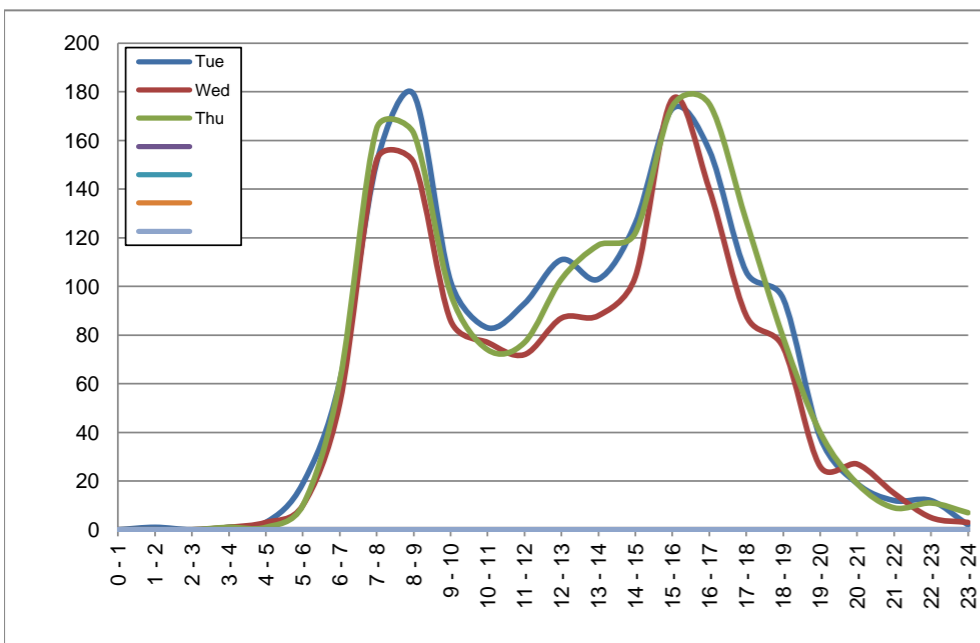
April 2, 2019 to April 4, 2019

## Hourly Volumes

Time Period	Tue	Wed	Thu			
	Apr 2	Apr 3	Apr 4			
0 - 1	0	0	0			
1 - 2	1	0	0			
2 - 3	0	0	0			
3 - 4	1	1	1			
4 - 5	3	3	1			
5 - 6	19	10	10			
6 - 7	61	52	61			
7 - 8	151	152	165			
8 - 9	179	151	163			
9 - 10	102	86	97			
10 - 11	83	77	74			
11 - 12	93	72	77			
12 - 13	111	87	103			
13 - 14	103	88	117			
14 - 15	126	104	122			
15 - 16	173	177	174			
16 - 17	156	140	175			
17 - 18	106	88	127			
18 - 19	95	75	79			
19 - 20	38	26	40			
20 - 21	19	27	19			
21 - 22	12	15	9			
22 - 23	12	5	11			
23 - 24	2	3	7			
<b>Day Total</b>	<b>1646</b>	<b>1439</b>	<b>1632</b>			

## 15-Minute Volumes

Time Start	Tue	Wed	Thu				Time Start	Tue	Wed	Thu			
	Apr 2	Apr 3	Apr 4					Apr 2	Apr 3	Apr 4			
0:00	0	0	0				12:00	26	21	26			
0:15	0	0	0				12:15	32	21	17			
0:30	0	0	0				12:30	30	23	29			
0:45	0	0	0				12:45	23	22	31			
1:00	1	0	0				13:00	34	28	34			
1:15	0	0	0				13:15	30	20	28			
1:30	0	0	0				13:30	22	15	26			
1:45	0	0	0				13:45	17	25	29			
2:00	0	0	0				14:00	35	24	27			
2:15	0	0	0				14:15	26	27	22			
2:30	0	0	0				14:30	25	26	39			
2:45	0	0	0				14:45	40	27	34			
3:00	0	0	0				15:00	36	35	31			
3:15	1	1	1				15:15	34	45	44			
3:30	0	0	0				15:30	63	59	67			
3:45	0	0	0				15:45	40	38	32			
4:00	0	1	0				16:00	45	34	44			
4:15	1	0	0				16:15	28	32	44			
4:30	1	1	0				16:30	39	38	43			
4:45	1	1	1				16:45	44	36	44			
5:00	2	0	1				17:00	36	25	41			
5:15	4	2	1				17:15	29	25	35			
5:30	6	3	3				17:30	19	22	24			
5:45	7	5	5				17:45	22	16	27			
6:00	9	7	9				18:00	31	26	24			
6:15	11	12	15				18:15	22	17	11			
6:30	16	14	15				18:30	29	21	25			
6:45	25	19	22				18:45	13	11	19			
7:00	28	30	34				19:00	14	5	16			
7:15	39	36	35				19:15	10	12	9			
7:30	35	38	43				19:30	7	4	9			
7:45	49	48	53				19:45	7	5	6			
8:00	49	43	50				20:00	3	5	8			
8:15	41	37	37				20:15	9	7	8			
8:30	47	39	50				20:30	5	5	1			
8:45	42	32	26				20:45	2	10	2			
9:00	23	23	29				21:00	3	4	3			
9:15	22	22	19				21:15	3	3	3			
9:30	28	19	23				21:30	3	1	3			
9:45	29	22	26				21:45	3	7	0			
10:00	21	24	18				22:00	7	1	1			
10:15	16	16	17				22:15	0	3	1			
10:30	27	21	19				22:30	4	1	5			
10:45	19	16	20				22:45	1	0	4			
11:00	28	27	23				23:00	1	0	1			
11:15	31	15	10				23:15	1	1	2			
11:30	13	14	25				23:30	0	2	2			
11:45	21	16	19				23:45	0	0	2			



Site notes:

# Vehicle Speed Summary

Saanich Engineering Department

Count Id: [C0074-01](#)

Filename: [Wallace Dr between Willis Point Rd and Municipal Boundary-Apr-2019.xlsm](#)

**Location:** Wallace Dr between Willis Point Rd and Municipal Boundary

Note: Willis Point Rd and Municipal Boundary

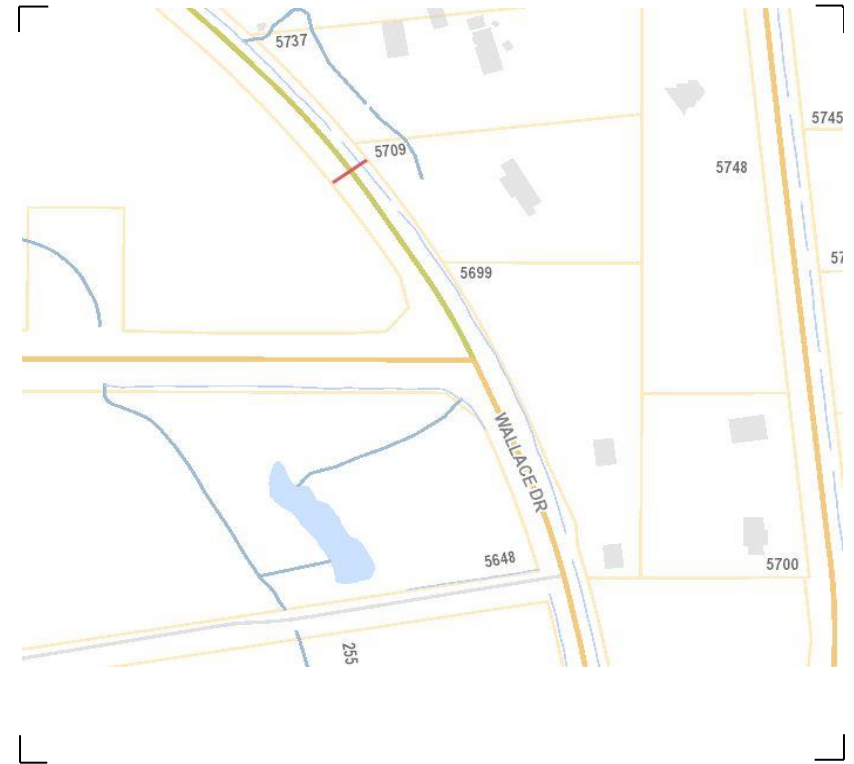
Direction: **North-South**

Dates: **March 31, 2019 To April 05, 2019**

*Filtered data*

AVG. SPEED	<b>36</b> mph	<b>59</b> km/h
50 % SPEED	<b>36</b> mph	<b>59</b> km/h
85 % SPEED	<b>42</b> mph	<b>67</b> km/h
95 % SPEED	<b>45</b> mph	<b>72</b> km/h

Location Map



# Wallace Dr between Willis Point Rd and Municipal Boundary

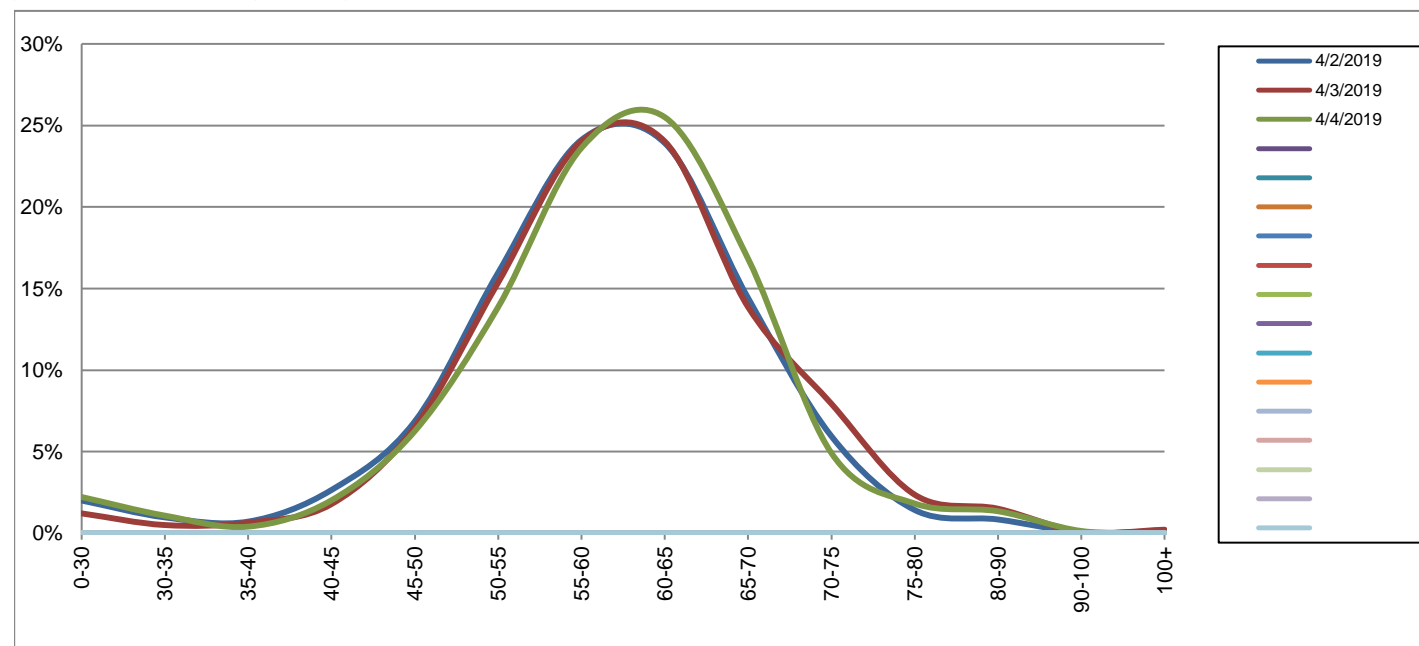
Northbound

April 2, 2019 to April 4, 2019

Daily Speed Bin Percentages														Daily Speed Bin Volumes														Total	Avg.	
Bin #	1	2	3	4	5	6	7	8	9	10	11	12	13	14	1	2	3	4	5	6	7	8	9	10	11	12	13	14	Volume	Speed
Bin Speeds	0-30	30-35	35-40	40-45	45-50	50-55	55-60	60-65	65-70	70-75	75-80	80-90	90-100	100+	0-30	30-35	35-40	40-45	45-50	50-55	55-60	60-65	65-70	70-75	75-80	80-90	90-100	100+		
4/2/2019	2.0%	1.0%	0.7%	2.7%	6.9%	16.0%	24.1%	23.9%	14.4%	5.9%	1.4%	0.8%	0.1%	0.1%	31	15	11	41	106	247	373	370	223	92	22	13	1	2	1547	59
4/3/2019	1.2%	0.5%	0.6%	1.8%	6.5%	15.4%	24.0%	24.0%	13.9%	7.9%	2.4%	1.5%	0.1%	0.2%	17	7	9	25	91	215	336	336	194	111	33	21	1	3	1399	60
4/4/2019	2.2%	1.1%	0.4%	2.0%	6.3%	13.9%	23.6%	25.5%	16.8%	4.9%	1.8%	1.3%	0.1%	0.0%	33	16	6	30	93	206	351	379	250	73	27	20	2	0	1486	59
<b>Total</b>	1.8%	0.9%	0.6%	2.2%	6.5%	15.1%	23.9%	24.5%	15.0%	6.2%	1.9%	1.2%	0.1%	0.1%	81	38	26	96	290	668	1060	1085	667	276	82	54	4	5	4432	59

### Speed Data Summary

Bin #	1	2	3	4	5	6	7	8	9	10	11	12	13	14	Total
Bin Speeds	0-30	30-35	35-40	40-45	45-50	50-55	55-60	60-65	65-70	70-75	75-80	80-90	90-100	100+	
Survey Total	81	38	26	96	290	668	1060	1085	667	276	82	54	4	5	4432
% Total	1.8%	0.9%	0.6%	2.2%	6.5%	15.1%	23.9%	24.5%	15.0%	6.2%	1.9%	1.2%	0.1%	0.1%	100%
Accumulated %	1.8%	2.7%	3.3%	5.4%	12.0%	27.1%	51.0%	75.5%	90.5%	96.7%	98.6%	99.8%	99.9%	100%	
Inverse Accum. %	98.2%	97.3%	96.7%	94.6%	88.0%	72.9%	49.0%	24.5%	9.5%	3.3%	1.4%	0.2%	0.1%	0.0%	
Average Speed	59 KM/H														



Site notes:

**Wallace Dr between Willis Point Rd and Municipal Boundary**

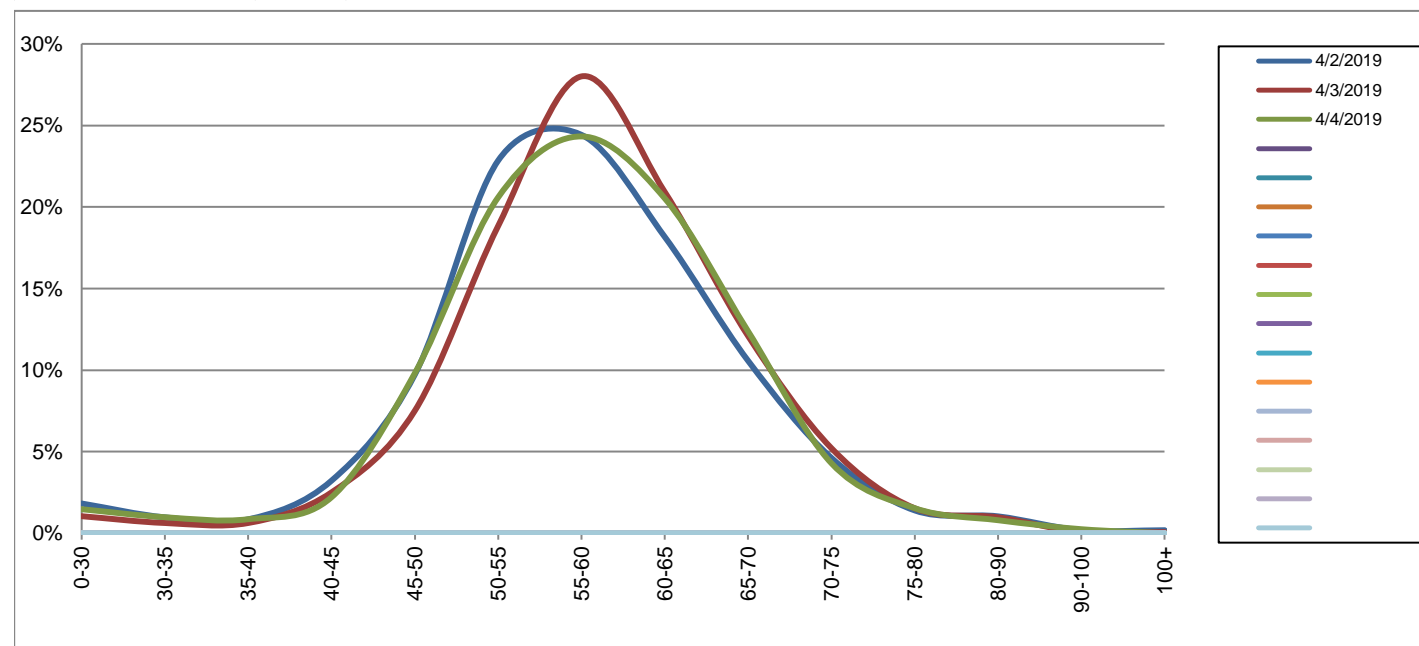
Southbound

April 2, 2019 to April 4, 2019

Daily Speed Bin Percentages															Daily Speed Bin Volumes														Total	Avg.
Bin #	1	2	3	4	5	6	7	8	9	10	11	12	13	14	1	2	3	4	5	6	7	8	9	10	11	12	13	14	Volume	Speed
Bin Speeds	0-30	30-35	35-40	40-45	45-50	50-55	55-60	60-65	65-70	70-75	75-80	80-90	90-100	100+	0-30	30-35	35-40	40-45	45-50	50-55	55-60	60-65	65-70	70-75	75-80	80-90	90-100	100+		
4/2/2019	1.8%	1.0%	0.9%	3.2%	9.7%	22.8%	24.4%	18.2%	10.6%	4.6%	1.4%	1.0%	0.2%	0.2%	30	16	14	53	160	376	402	299	174	76	23	17	3	3	1646	57
4/3/2019	1.0%	0.6%	0.6%	2.5%	7.5%	18.8%	28.0%	20.9%	12.1%	5.2%	1.5%	1.0%	0.1%	0.1%	15	9	9	36	108	271	403	301	174	75	22	14	1	1	1439	58
4/4/2019	1.5%	1.0%	0.9%	2.2%	9.8%	20.6%	24.3%	20.5%	12.4%	4.3%	1.5%	0.8%	0.2%	0.0%	24	16	14	36	160	336	397	335	202	70	25	13	4	0	1632	58
<b>Total</b>	1.5%	0.9%	0.8%	2.6%	9.1%	20.8%	25.5%	19.8%	11.7%	4.7%	1.5%	0.9%	0.2%	0.1%	69	41	37	125	428	983	1202	935	550	221	70	44	8	4	4717	58

**Speed Data Summary**

Bin #	1	2	3	4	5	6	7	8	9	10	11	12	13	14	Total
Bin Speeds	0-30	30-35	35-40	40-45	45-50	50-55	55-60	60-65	65-70	70-75	75-80	80-90	90-100	100+	
Survey Total	69	41	37	125	428	983	1202	935	550	221	70	44	8	4	4717
% Total	1.5%	0.9%	0.8%	2.6%	9.1%	20.8%	25.5%	19.8%	11.7%	4.7%	1.5%	0.9%	0.2%	0.1%	100%
Accumulated %	1.5%	2.3%	3.1%	5.8%	14.8%	35.7%	61.2%	81.0%	92.6%	97.3%	98.8%	99.7%	99.9%	100%	
Inverse Accum. %	98.5%	97.7%	96.9%	94.2%	85.2%	64.3%	38.8%	19.0%	7.4%	2.7%	1.2%	0.3%	0.1%	0.0%	
Average Speed	58 KM/H														



Site notes:

Wallace Dr between Willis Point Rd and Municipal Boundary

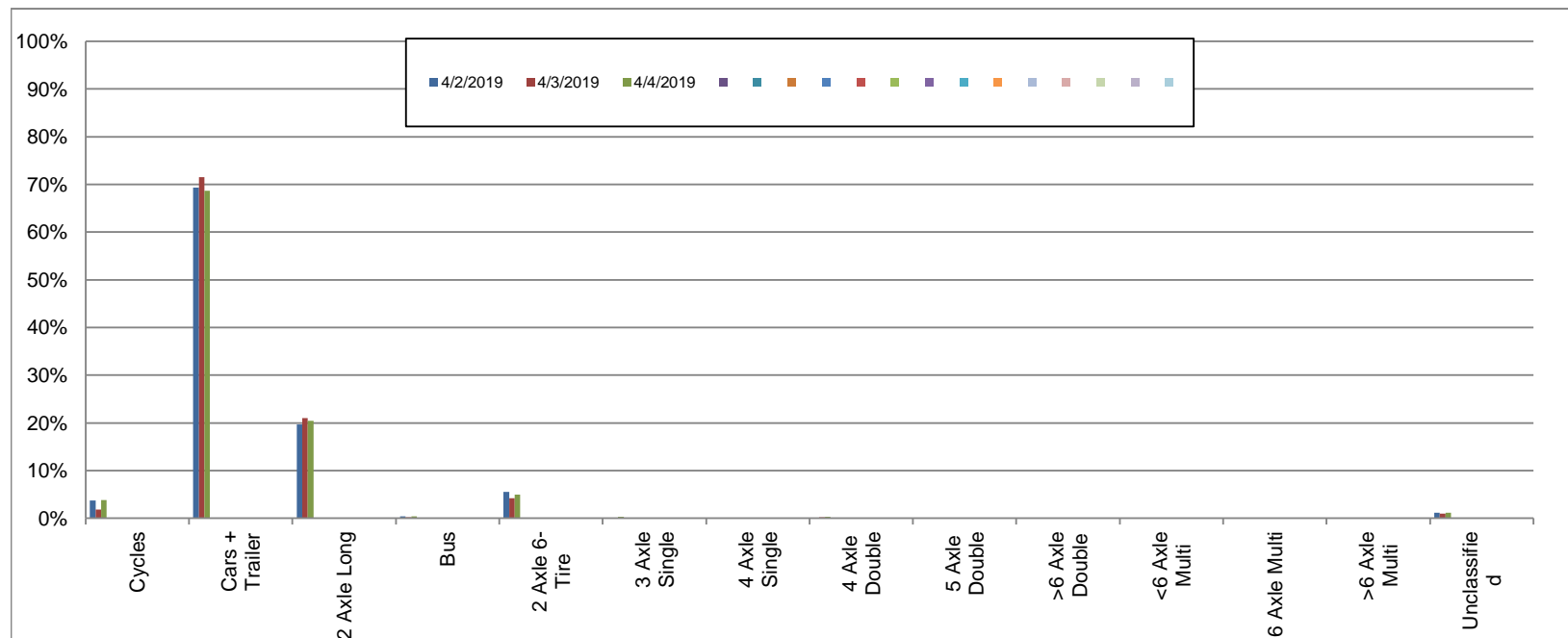
Northbound

April 2, 2019 to April 4, 2019

Daily Class Bin Percentages															Daily Class Bin Volumes														
Bin #	1	2	3	4	5	6	7	8	9	10	11	12	13	14	1	2	3	4	5	6	7	8	9	10	11	12	13	14	Total Volume
Bin Class	Cycles	Cars + Trailer	2 Axle Long	Bus	2 Axle 6-Tire	3 Axle Single	4 Axle Single	4 Axle Double	5 Axle Double	>6 Axle Double	<6 Axle Multi	6 Axle Multi	>6 Axle Multi	Unclassified	Cycles	Cars + Trailer	2 Axle Long	Bus	2 Axle 6-Tire	3 Axle Single	4 Axle Single	4 Axle Double	5 Axle Double	>6 Axle Double	<6 Axle Multi	6 Axle Multi	>6 Axle Multi	Unclassified	
4/2/2019	3.7%	69.4%	19.7%	0.4%	5.5%	0.0%	0.0%	0.1%	0.0%	0.0%	0.0%	0.0%	0.0%	1.2%	58	1073	305	6	85	0	0	2	0	0	0	0	0	18	1547
4/3/2019	1.8%	71.5%	21.0%	0.2%	4.2%	0.1%	0.0%	0.2%	0.0%	0.0%	0.0%	0.0%	0.0%	1.0%	25	1000	294	3	59	1	0	3	0	0	0	0	0	14	1399
4/4/2019	3.8%	68.6%	20.5%	0.4%	4.9%	0.3%	0.0%	0.3%	0.0%	0.0%	0.0%	0.0%	0.0%	1.1%	57	1020	304	6	73	4	0	5	0	0	0	0	0	17	1486
<b>Total</b>	<b>3.2%</b>	<b>69.8%</b>	<b>20.4%</b>	<b>0.3%</b>	<b>4.9%</b>	<b>0.1%</b>	<b>0.0%</b>	<b>0.2%</b>	<b>0.0%</b>	<b>0.0%</b>	<b>0.0%</b>	<b>0.0%</b>	<b>0.0%</b>	<b>1.1%</b>	<b>140</b>	<b>3093</b>	<b>903</b>	<b>15</b>	<b>217</b>	<b>5</b>	<b>0</b>	<b>10</b>	<b>0</b>	<b>0</b>	<b>0</b>	<b>0</b>	<b>0</b>	<b>49</b>	<b>4432</b>

Class Data Summary

Bin #	1	2	3	4	5	6	7	8	9	10	11	12	13	14	Total Volume
Bin Class	Cycles	Cars + Trailer	2 Axle Long	Bus	2 Axle 6-Tire	3 Axle Single	4 Axle Single	4 Axle Double	5 Axle Double	>6 Axle Double	<6 Axle Multi	6 Axle Multi	>6 Axle Multi	Unclassified	Total Volume
<b>Survey Total</b>	140	3093	903	15	217	5	0	10	0	0	0	0	0	49	4432
<b>% Total</b>	3.2%	69.8%	20.4%	0.3%	4.9%	0.1%	0.0%	0.2%	0.0%	0.0%	0.0%	0.0%	0.0%	1.1%	100%
<b>Accumulated %</b>	3.2%	72.9%	93.3%	93.7%	98.6%	98.7%	98.7%	98.9%	98.9%	98.9%	98.9%	98.9%	98.9%	100.0%	
<b>Inv. Accum. %</b>	96.8%	27.1%	6.7%	6.3%	1.4%	1.3%	1.3%	1.1%	1.1%	1.1%	1.1%	1.1%	1.1%	0.0%	



Classification Descriptions

Bin #	Bin Description
1	Motorcycles
2	Passenger cars, including those with recreational trailers
3	2-axle pick-ups, vans, and RVs, including those with recreational trailers
4	Buses
5	2-axle, 6-tire single units
6	3-axle single units
7	4-axle single units
8	3-axle or 4-axle double unit
9	5-axle double unit
10	6-, 7-, or 8-axle double unit
11	5-axle multiple unit
12	6-axle multiple unit
13	7-or-more-axle multiple unit
14	Vehicles that could not be classified

Site notes:



# Wallace Dr between Willis Point Rd and Municipal Boundary

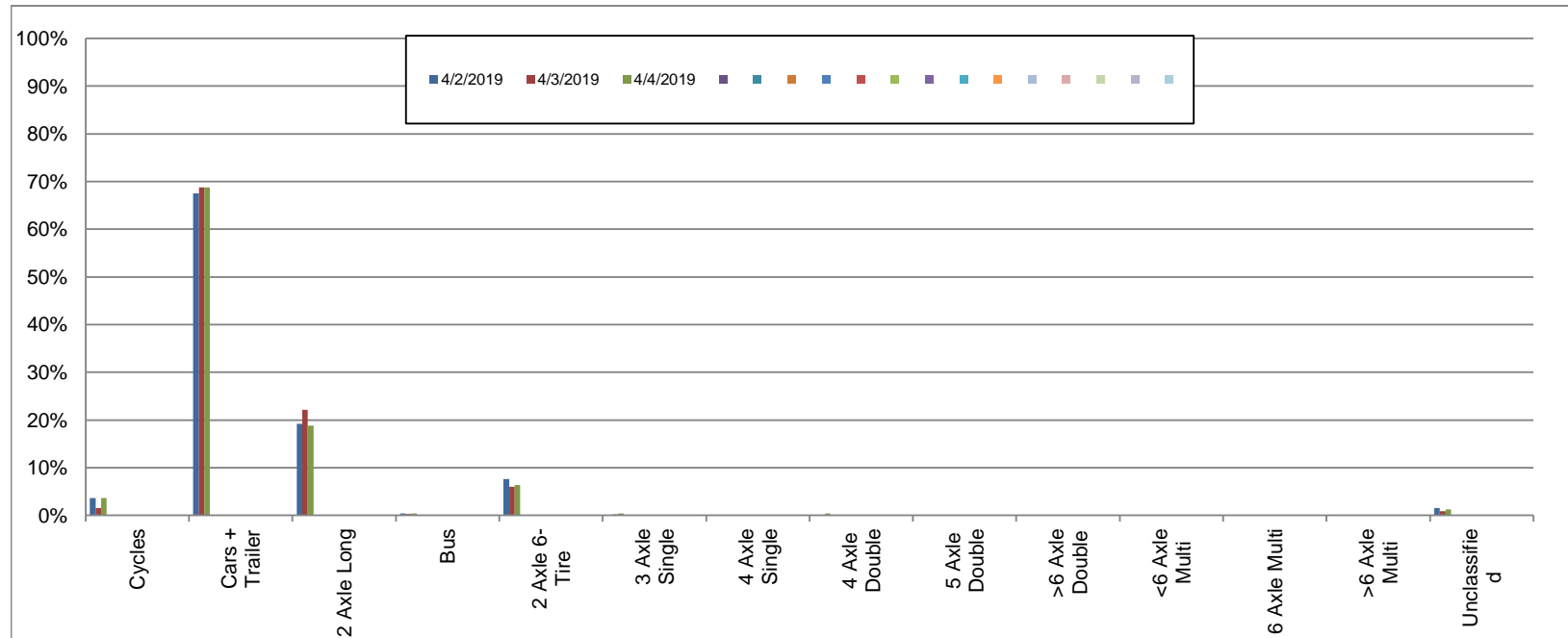
Southbound

April 2, 2019 to April 4, 2019

Daily Class Bin Percentages															Daily Class Bin Volumes															
Bin #	1	2	3	4	5	6	7	8	9	10	11	12	13	14	1	2	3	4	5	6	7	8	9	10	11	12	13	14	Total Volume	
Bin Class	Cycles	Cars + Trailer	2 Axle Long	Bus	2 Axle 6-Tire	3 Axle Single	4 Axle Single	4 Axle Double	5 Axle Double	>6 Axle Double	<6 Axle Multi	6 Axle Multi	>6 Axle Multi	Unclassified	Cycles	Cars + Trailer	2 Axle Long	Bus	2 Axle 6-Tire	3 Axle Single	4 Axle Single	4 Axle Double	5 Axle Double	>6 Axle Double	<6 Axle Multi	6 Axle Multi	>6 Axle Multi	Unclassified		
4/2/2019	3.6%	67.5%	19.2%	0.4%	7.7%	0.0%	0.0%	0.1%	0.0%	0.0%	0.0%	0.0%	0.0%	1.6%	59	1111	316	6	126	0	0	2	0	0	0	0	0	0	26	1646
4/3/2019	1.5%	68.8%	22.1%	0.3%	6.0%	0.2%	0.0%	0.1%	0.0%	0.1%	0.0%	0.0%	0.0%	0.9%	22	990	318	4	86	3	0	2	0	1	0	0	0	0	13	1439
4/4/2019	3.6%	68.8%	18.8%	0.4%	6.4%	0.4%	0.0%	0.4%	0.0%	0.0%	0.0%	0.0%	0.0%	1.3%	59	1122	307	7	104	6	0	6	0	0	0	0	0	0	21	1632
<b>Total</b>	<b>3.0%</b>	<b>68.3%</b>	<b>19.9%</b>	<b>0.4%</b>	<b>6.7%</b>	<b>0.2%</b>	<b>0.0%</b>	<b>0.2%</b>	<b>0.0%</b>	<b>0.0%</b>	<b>0.0%</b>	<b>0.0%</b>	<b>0.0%</b>	<b>1.3%</b>	<b>140</b>	<b>3223</b>	<b>941</b>	<b>17</b>	<b>316</b>	<b>9</b>	<b>0</b>	<b>10</b>	<b>0</b>	<b>1</b>	<b>0</b>	<b>0</b>	<b>0</b>	<b>60</b>	<b>4717</b>	

### Class Data Summary

Bin #	1	2	3	4	5	6	7	8	9	10	11	12	13	14	Total Volume
Bin Class	Cycles	Cars + Trailer	2 Axle Long	Bus	2 Axle 6-Tire	3 Axle Single	4 Axle Single	4 Axle Double	5 Axle Double	>6 Axle Double	<6 Axle Multi	6 Axle Multi	>6 Axle Multi	Unclassified	Total Volume
<b>Survey Total</b>	140	3223	941	17	316	9	0	10	0	1	0	0	0	60	4717
<b>% Total</b>	3.0%	68.3%	19.9%	0.4%	6.7%	0.2%	0.0%	0.2%	0.0%	0.0%	0.0%	0.0%	0.0%	1.3%	100%
<b>Accumulated %</b>	3.0%	71.3%	91.2%	91.6%	98.3%	98.5%	98.5%	98.7%	98.7%	98.7%	98.7%	98.7%	98.7%	100.0%	
<b>Inv. Accum. %</b>	97.0%	28.7%	8.8%	8.4%	1.7%	1.5%	1.5%	1.3%	1.3%	1.3%	1.3%	1.3%	1.3%	0.0%	



### Classification Descriptions

Bin #	Bin Description
1	Motorcycles
2	Passenger cars, including those with recreational trailers
3	2-axle pick-ups, vans, and RVs, including those with recreational trailers
4	Buses
5	2-axle, 6-tire single units
6	3-axle single units
7	4-axle single units
8	3-axle or 4-axle double unit
9	5-axle double unit
10	6-, 7-, or 8-axle double unit
11	5-axle multiple unit
12	6-axle multiple unit
13	7-or-more-axle multiple unit
14	Vehicles that could not be classified

Site notes: